



# ULISSE



# ATENA

lettino | sunbed  
Sonnenliege

sedia a sdraio | deckchair  
Liegestuhl



### IT

- telaio in alluminio anodizzato con o senza tetto
- bulloneria inox
- telo "textilene" in tessuto di PVC
- schienale regolabile 3 posizioni

### IT

- telaio in alluminio anodizzato
- bulloneria inox
- telo "textilene" in tessuto di PVC
- schienale regolabile 3 posizioni

### EN

- anodized aluminium frame with or without sunshade
- nuts and bolts of stainless steel
- "textilene" canvas of PVC - fabric
- backrest adjustable to 3 positions

### EN

- anodized aluminium frame
- nuts and bolts of stainless steel
- "textilene" canvas of PVC - fabric
- backrest adjustable to 3 positions

### DE

- Rahmen aus eloxiertem Aluminium mit oder ohne Sonnendach
- Edelstahlbolzen
- Bespannung aus PVC "Textilene"
- 3-fach verstellbar Rückenlehne

### DE

- Rahmen aus eloxiertem Aluminium
- Edelstahlbolzen
- Bespannung aus PVC "Textilene"
- 3-fach verstellbar Rückenlehne



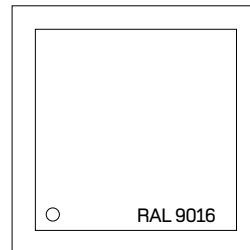
ulisse



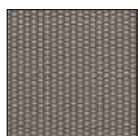
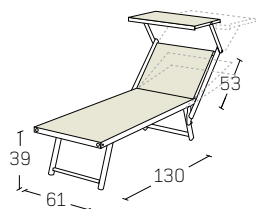
atena



3 posizioni  
3 positions  
3-fach verstellbar



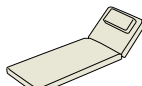
laccato bianco  
lacquered in white  
weißlackiert



thick fabric



open-work fabric



icaro



kg

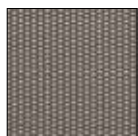
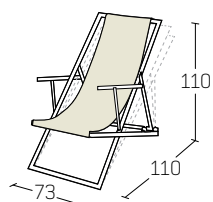


packing - volume



packing - volume

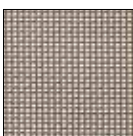
art. UL01	with sunshade			-	kg. 11,90	pz. 1	14x162x82 h cm	m <sup>3</sup> 0,19	pz. 20	m <sup>3</sup> 2,50
art. UL02	without sunshade			-	kg. 10,30	pz. 1	14x162x82 h cm	m <sup>3</sup> 0,19	pz. 20	m <sup>3</sup> 2,50
art. IC01	icaro classic	-	-		kg. 2,80	pz. 1	61x175x8 h cm	m <sup>3</sup> 0,09	-	-
art. IC04	icaro waterproof	-	-		kg. 2,80	pz. 1	61x175x8 h cm	m <sup>3</sup> 0,09	-	-



thick fabric



open-work fabric



TRO fabric



kg



packing - volume



packing - volume

art. AT01	with armrest				kg. 7,50	pz. 1	8x151x77 h cm	m <sup>3</sup> 0,093	pz. 30	m <sup>3</sup> 1,50
art. AT02	without armrest				kg. 6,80	pz. 1	8x151x77 h cm	m <sup>3</sup> 0,093	pz. 30	m <sup>3</sup> 1,50